

CLB-203 SERIES

(CC7500 - Two-Section Ball Bearing Slides)

Chassis Trak[®] Telescopic Slides

Slide Description: CLB-203 slides are two-section slides providing 3/4 extension. Slides are sold in sets of two unhandled slides and can be mounted to the right or left hand side. Slides feature a front quick disconnect with locking or automatic release (AR) feature at full extension. Slides are made from 14 gauge steel, plated with RoHS compliant zinc and sealed with bright (clear) finish. Slides are supplied with standard #8-32 x 3/8" Phillips pan head screws and self-locking nuts for mounting one set of slides.

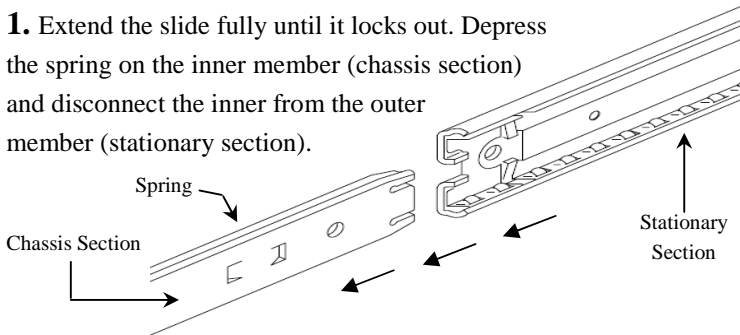
Mounting brackets for mounting in electronic cabinets and racks are sold separately. CLB-203 Mounting Bracket options are listed on the back of this instruction sheet.

Recommended Mounting: Slides may be mounted in EIA racks or "flat" mounted (no brackets) directly to the sides of furniture or enclosures. Slides are designed for parallel alignment and level mounting.

Catalog Descriptions: CLB-203-XX and CLB-203-XX-AR

Easy, Step-by-Step Instructions for EIA Rack Mounting (Brackets required)

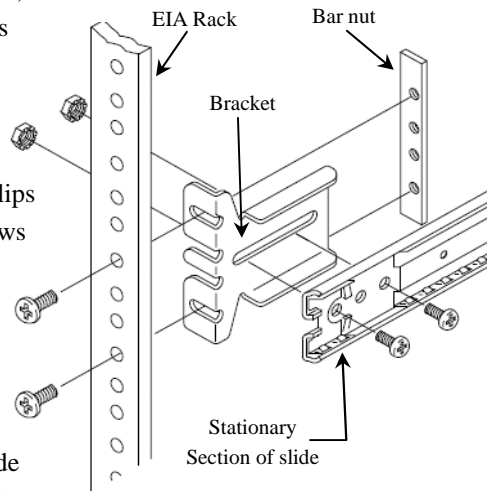
1. Extend the slide fully until it locks out. Depress the spring on the inner member (chassis section) and disconnect the inner from the outer member (stationary section).



2. Mount brackets to the stationary section of the slide.

For adjustment purposes, screw the back brackets on loosely.

3. Install the cabinet members into the EIA rack using #10-32 Phillips pan head machine screws and bar nuts as shown. Keep the front bracket as close to the front of the slide as possible. Use the rear bracket to align and adjust the slide to the rear mounting rails.



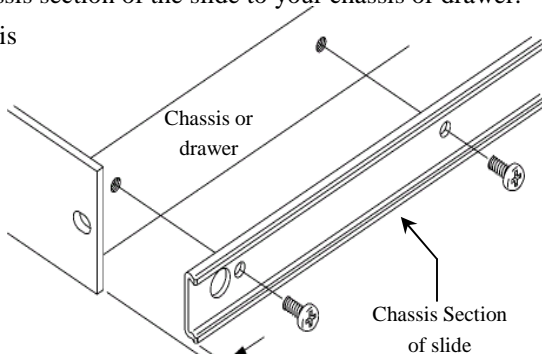
Do not tighten crews until you are ready for final adjustment.

4. Mount the chassis section of the slide to your chassis or drawer.

Position the chassis sections 1/8 inch from the front edge of the chassis, making sure that both chassis sections are parallel.

Use #8-32 x 3/8"

Phillips pan head machine 1/8" screws. (.094 inch head height maximum.) Use of screws other than pan head type may cause interference with the slide's ball retainers.

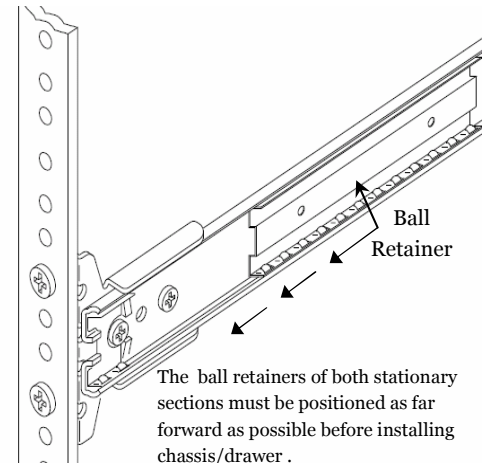


5. Make sure the mounted slide sections are level and parallel.

6. Pull the ball retainers (ball cages) forward towards the front of the cabinet. Install the chassis by fitting the slide sections together. Slide will stop at locked-out position. Check the alignment by closing completely and then opening the slide to full extension.

Depress spring again and slide the chassis to the closed position.

7. Binding indicates there is lateral stress or misalignment, continue to adjust the slide position until movement is smooth. Tighten all screws.



"Hard" or Flat Mounting (Brackets not required)

1. Follow step 1 of EIA Rack Mounting.
2. Install cabinet members by using #8 Phillips pan head screws. (.094 inch screw head height maximum)
3. Follow steps 4 - 7 of EIA Rack Mounting.

Need Additional Help?

Visit www.generaldevices.com for the name of your local, factory-trained General Devices Representative.

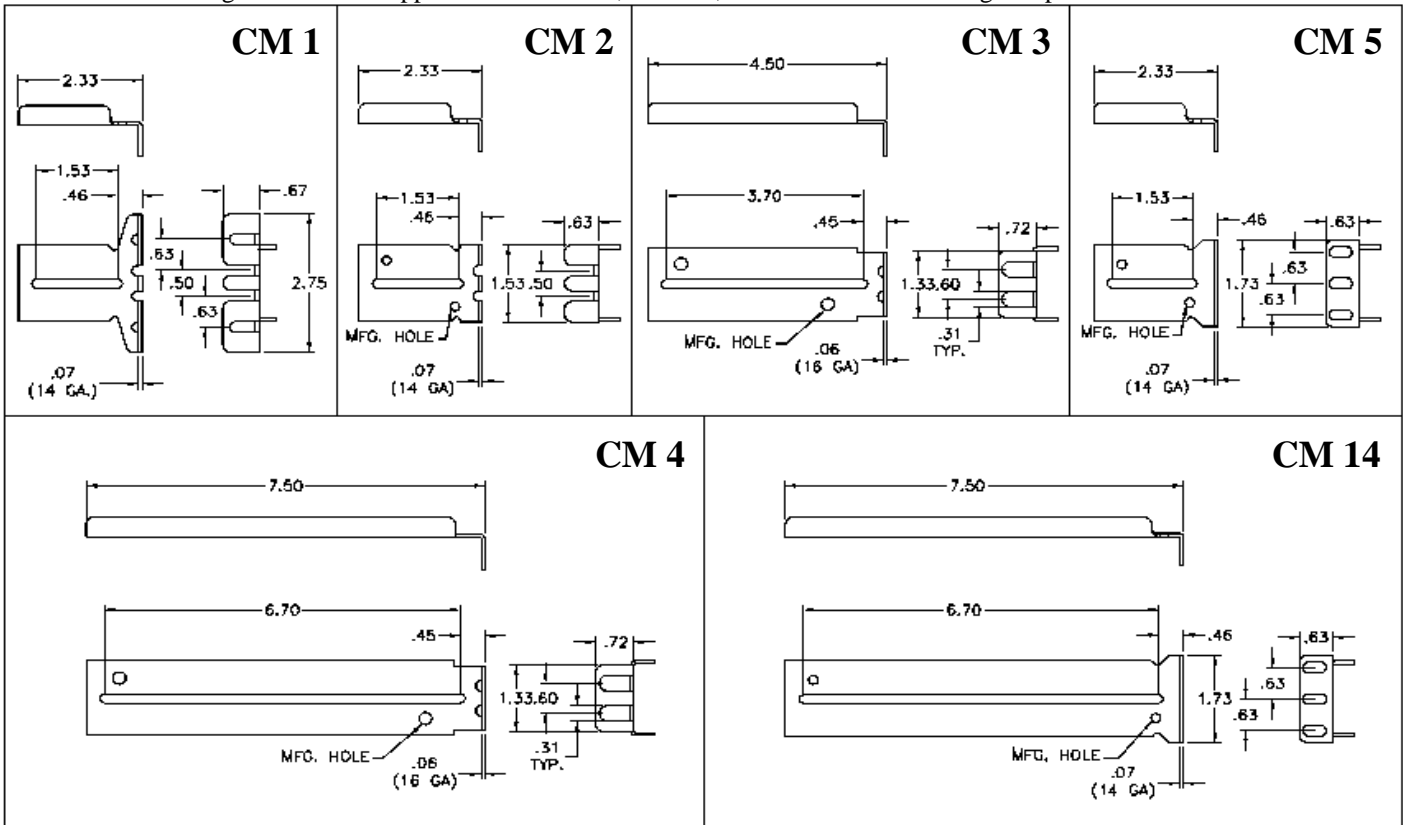
Need help fast?

Call the factory (317) 897-7000 or email sales@generaldevices.com

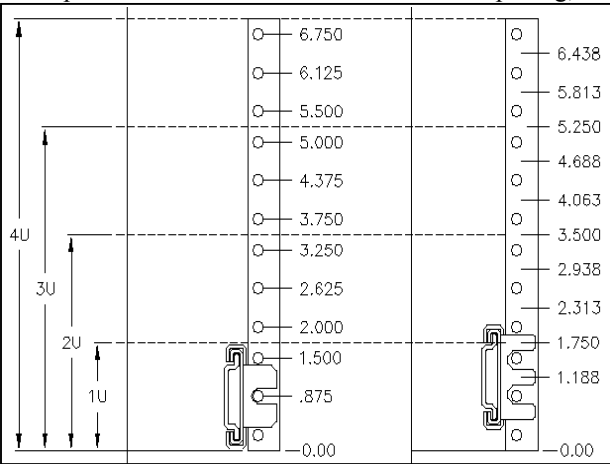
General Devices Company, Inc.
P.O. Box 39100
1410 South Post Road
Indianapolis, IN 43239-0100 USA
Phone: (317) 897-7000
Fax: (317) 898-2917



CLB-203 Mounting Bracket Options A number of mounting brackets kits are available for CLB-203 slides. All cabinet mounting brackets are supplied with brackets, bar nuts, and screws for mounting one pair of slides to a cabinet.



Understanding EIA- The Electronics Industries Association (EIA) has established standards for a portion of the dimensional characteristics of “rack mount” style components and the racks/cabinets in which they are mounted. Per EIA standards 1 rack unit (1U) is equal to 1.75”. Thus the height of a rack mount component will be in 1.75” increments, i.e.; 1U = 1.75”, 2U = 3.5”, 3U=5.25”, etc. Likewise, racks/cabinets will have a vertical opening to accommodate a certain number of U’s. For example a 20U rack will have a 35” vertical opening, a 40U rack will have a 70” opening, etc.



The EIA standard also specifies that a rack/cabinet will have 3 mounting holes in each “U”. One hole is centered in the 1.75” “U” space, while the other 2 holes are spaced .625” above and below the center hole. These holes may be threaded, round or square clearance holes.

NOTE: EIA standards do not address the location of slide mounting holes on the side of rack mount components so the appropriate slide and/or slide mounting brackets must be selected. To do this, measure the distance from bottom of the component up to the center line of the slide mounting holes and determine where the slide would fall within a “U” and select the appropriate style bracket or slide.

Chassis Trak® Telescopic Slides For more than 50 years, General Devices has provided the industry’s broadest selection of quality slides available from a single source.

- **Solid Bearing Slides** - rugged, versatile slides with high tolerance for shock, vibration and harsh temperatures. For low-to-moderate cycle applications with light-to-heavy loads.
- **Roller Bearing Slides** - durable slides with rollers to minimize push-pull force. For moderate cycle applications with heavy loads.
- **Ball Bearing Slides** - smooth operating slides for high cycle applications with light-to-heavy loads.
- **Bottom Mount Slides** - slides with extremely heavy load bearing capability - to 1,500 lbs each. For low-to-moderate cycle applications.
- **Custom Slides** - special slides for unique applications, including the Space Station, drilling rigs, museum displays, clean rooms, fire engines, and more.

